

# PA Ball Valve

Full Bore Ball Valve With A Drain Port Option!

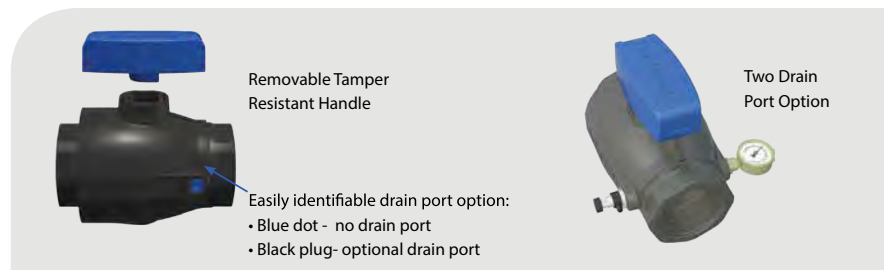
## Features and benefits

- Full bore design minimizing pressure loss
- Two drain ports
- Rated PN16
- Glass Reinforced Polyamide body



PLASSON'S Ball Valve is produced entirely of plastic, eliminating the risk of corrosive damage to the system.

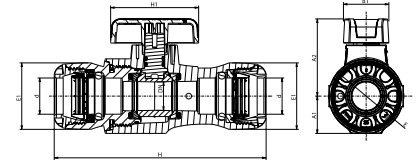
PLASSON'S Ball Valve features an option for two ISO 7-2 Rp drain ports or no drain ports. Ideally suited for draining or sampling of potable water systems and monitoring system pressure.



## PA Ball Valve Series 1 x Series 1

**NEW!**

037100



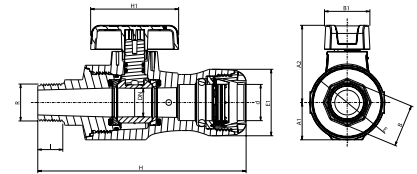
Product Code	Size d	Rp	DN	A1	A2	H	E	E1	UB	UC	W
03710S00025	25	1/8"	20	27	54	150	53	47	—		
03710S00032	32	1/8"	25	33	64	170	64	58	—		

\* 03710SF - with drain port | \* 03710SF - con sistema de purga

## PA Ball Valve Series 1 x Male

**NEW!**

0371002



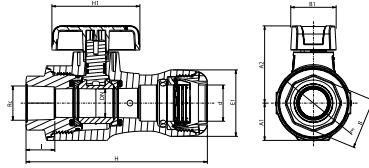
Product Code	Size dxR	Rp	DN	A1	A2	H	I2	B	E	E1	UC	W
03710020S00025007	25 x 3/4"	1/8"	20	27	54	148	18	30	53	47		
03710020S00032010	32 x 1"	1/8"	25	33	64	165	21	41	64	58		

\* 03710020SF - with drain port | \* 03710020SF - con sistema de purga

## PA Ball Valve Series 1 x Female

**NEW!**

0371003



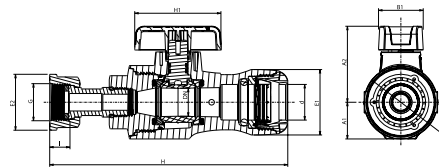
Product Code	Size dxRc	Rp	DN	A1	A2	H	I2	B	E	E1	UC	W
03710030S00025007	25 x 3/4"	1/8"	20	27	54	129	19	36	53	47		
03710030S00032010	32 x 1"	1/8"	25	33	64	148	22	46	64	58		

\* 03710030SF - with drain port | \* 03710030SF - con sistema de purga

## PA Ball Valve Series 1 x Free Nut

**NEW!**

0371016

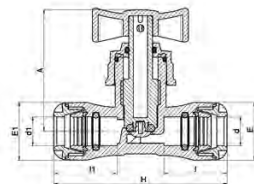


Product Code	Size dxG	Rp	DN	A1	A2	H	E	E1	E1	UC	W
0371016S00025007	25 x 3/4"	1/8"	20	27	54	171	53	47	40		
0371016S00025010	25 x 1"	1/8"	25	27	54	179	53	47	48		
0371016S00032010	32 x 1"	1/8"	32	33	64	192	64	57	48		

\* 0371016SF - with drain port | \* 0371016SF - con sistema de purga

## Compression Stoptap

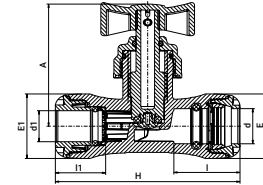
034100



Product Code	Size d x d1	E	H	I	I1	A	E1	UB	UC	W
034100020	20 x 20	41	123	45	-	89	-	1	130	145
034100025	25 x 25	47	134	48	-	89	-	1	130	167
034100025020	25 x 20	47	129	48	45	89	42	1	130	161
034100032	32 x 32	58	152	54	-	89	-	1	80	225

## Stoptap - Copper Pipe Adaptor

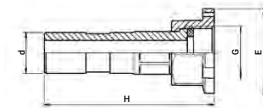
0341C0



Product Code	Size d x d1	E	H	I	I1	A	E1	UB	UC	W
0341C0020015	20 x 15	41	123	45	45	89	41	1	130	149
0341C0025015	25 x 15	47	129	48	46	89	42	1	130	165
0341C0025022	25 x 22	47	134	48	48	89	47	1	130	171
0341C0032028	32 x 28	58	159	54	54	89	58	1	80	223

## Free Nut Union for Water Meter

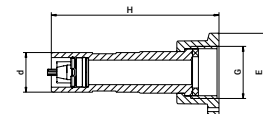
0358916



Product Code	Size d x G	E	H	UB	UC	W
0358916020	20 x 3/4"	42	86	1	150	75
0358916025	25 x 1"	50	90	1	150	111

## Free Nut Adaptor with Check Valve

0358917



Product Code	Size d x G	E	H	UB	UC	W
0358917020	20 x 3/4"	44	86	10	300	40
0358917025	25 x 1"	50	90	10	300	58